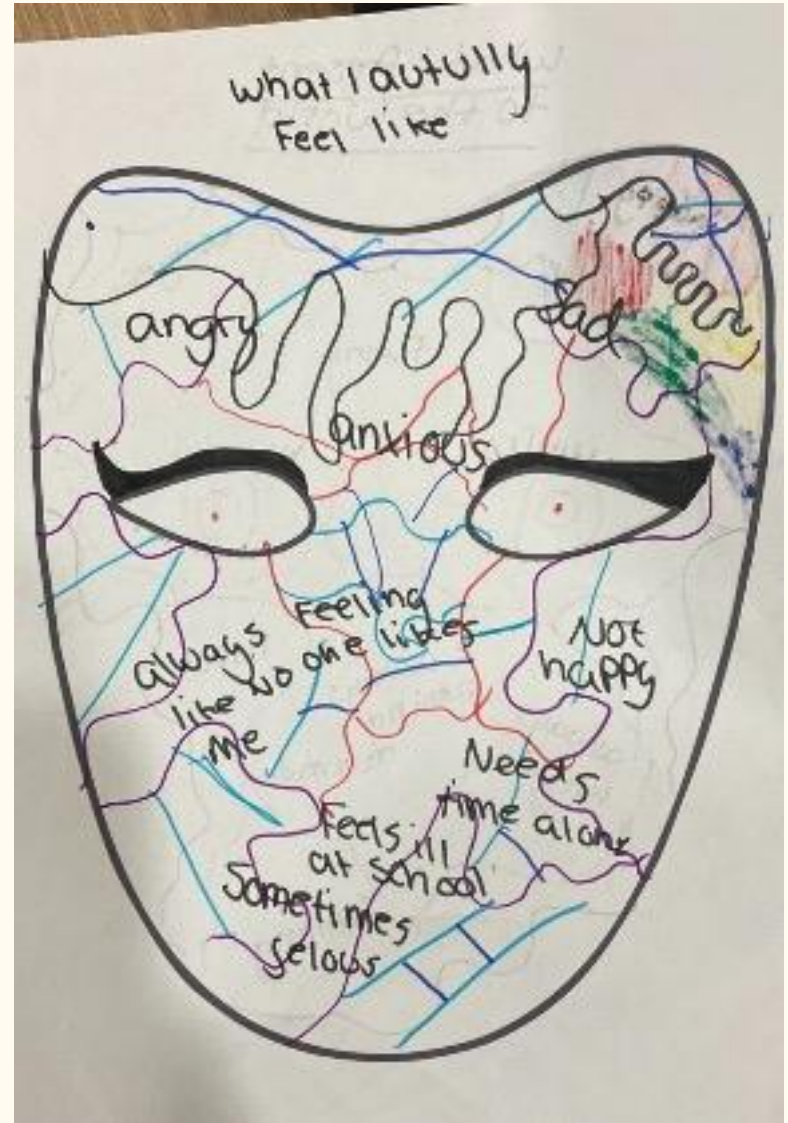
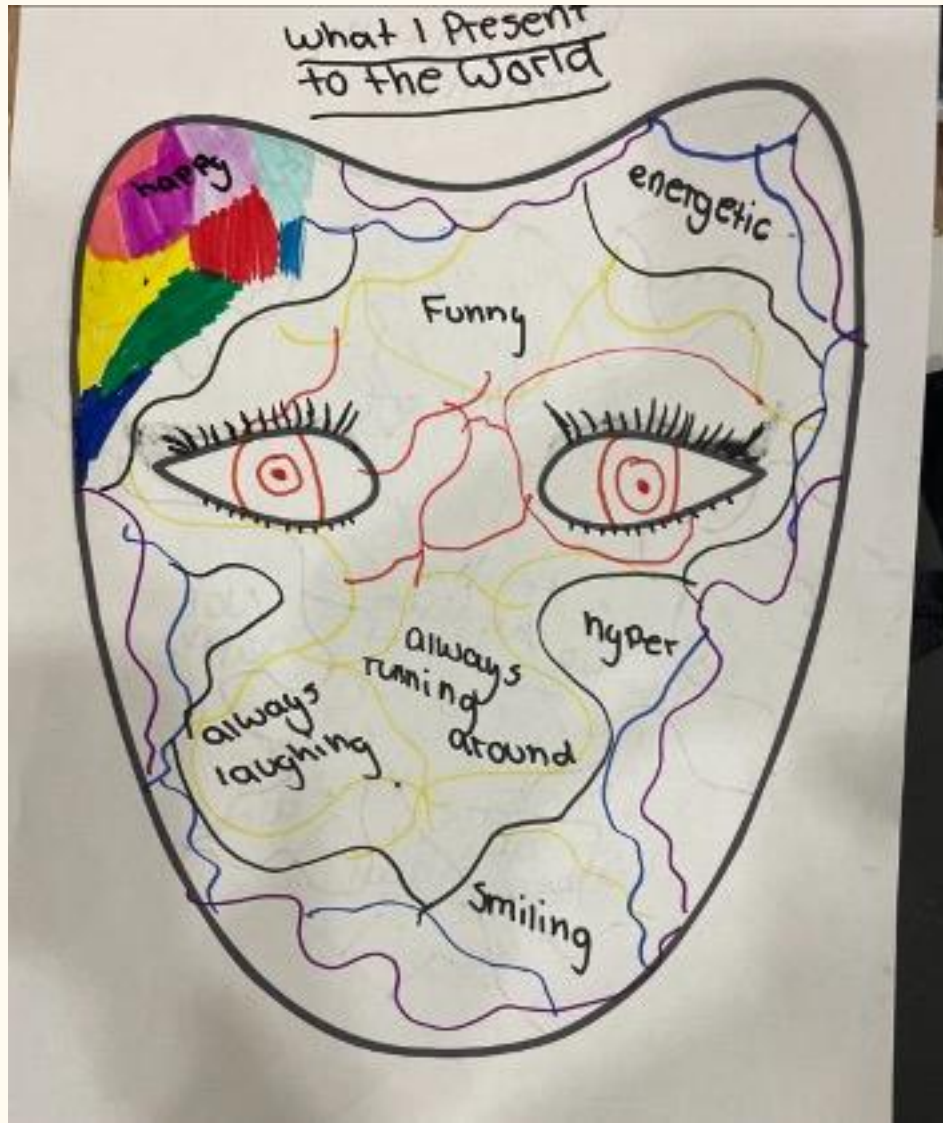


Neurodiversity Waiting Times Programme Update

11th December 2023

Kate Gleave

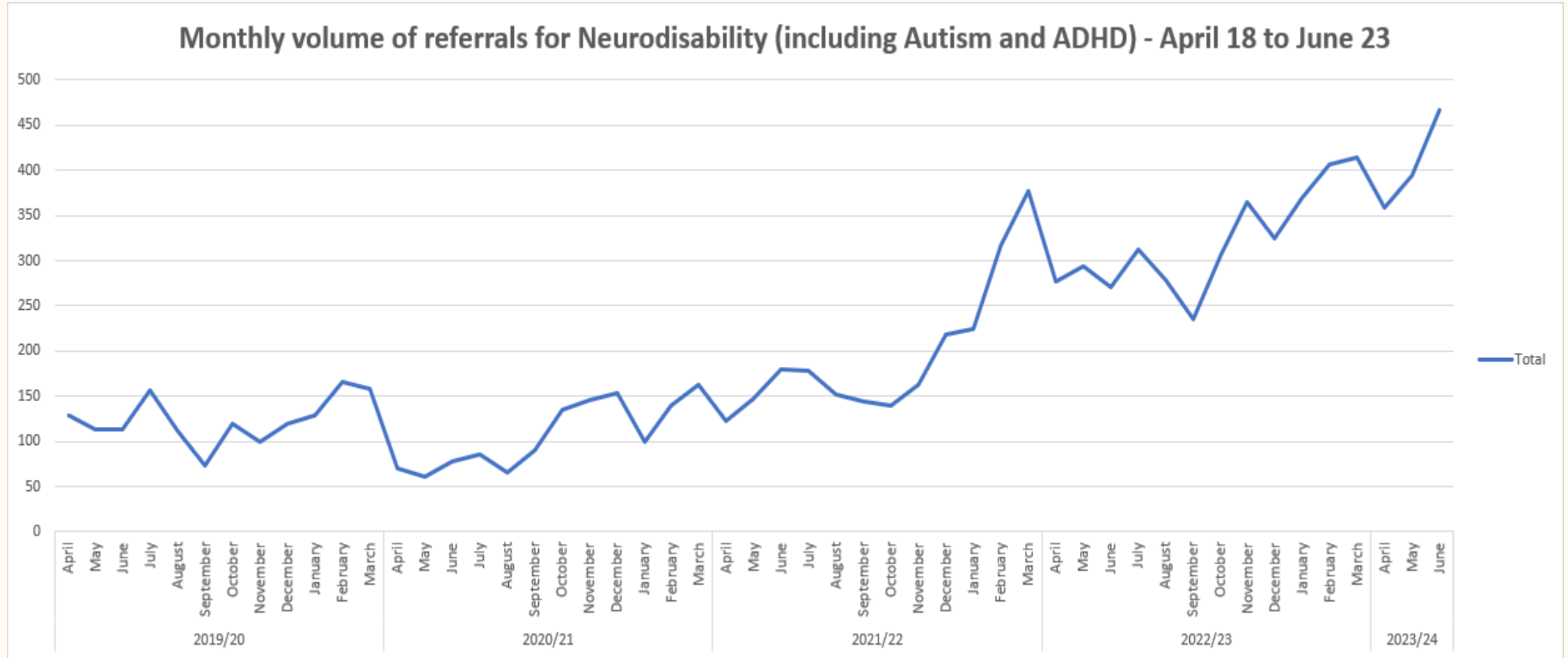




Background

- Improving all age neurodiversity waiting times is a key priority for Sheffield Health and Care Partnership for 2023/24.
- A programme brief was approved at the HCP Board meeting in August 2023 describing the programme's aims, milestones and risks.
- The HCP agreed that whilst the programme is all age, there needed to be a specific focus on children because of the potential impact on their life chances
- HCP has requested an update on all age with a specific focus on the CYP waiting times programme for its meeting in December.

Current Position



The number of referrals in the 2019/20 fiscal year was **1486**. In the past 12 months (up to the end of June) it has been **4216**, equating to a **284% increase**.

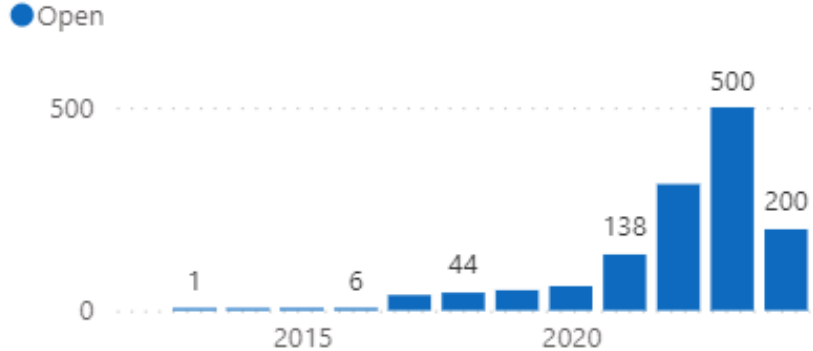
Autism and Social Communication Service, SCC

Currently 1357 pupils currently open to targeted, focused pupil work, up by around **400** since 2020

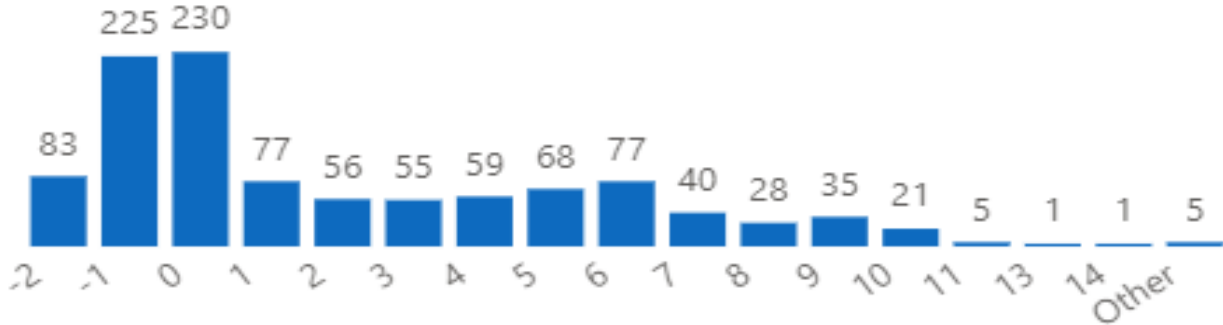
For **new** cases:

- opened 84 in 2020,
- opened **500** in 2023.
- opened **200** already this academic year 2023/2024.

No. of involvements by academic year opened



No. of involvements by NCY at involvement start

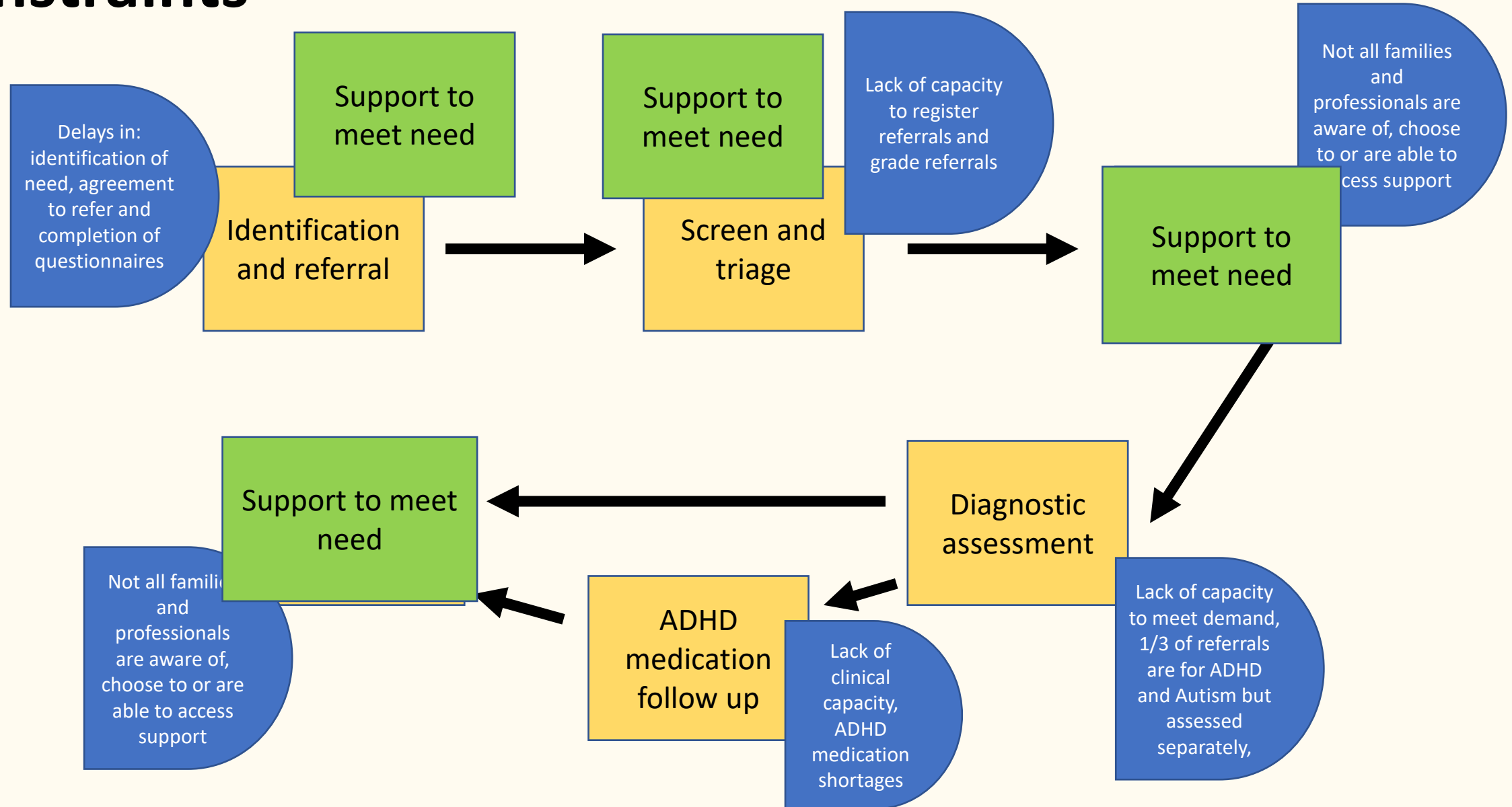


NCY is National Curriculum Year (-2 and -1 are pre-school, 0 is reception)

Scale of the challenge – Autism and ADHD assessments

- Trust received 4216 referrals in 12 months to Jun 23
- Trust capacity to undertake approx. 1140 assessments p.a.
- Trust currently forecasting that by March 24 there will be approximately 1,100 patients waiting over 18 months for an Autism assessment and 400 patients for ADHD assessments
- We are unlikely to be able to secure or provide these levels of assessment – we therefore have to maximise the number of providers who can complete assessments and expand our support offer prior to assessment.

Current Autism and ADHD approach with some of the constraints



Our Sheffield Partnership aim

- **To design an approach in Sheffield which:**
 - supports and meets the needs of neurodivergent children, young people, adults and their families, first time in a more holistic way,
 - moves away from a medical centric service (where appropriate) to one which supports and empowers people in their communities.
 - alleviates pressure on the current specialist model of care for Autism and ADHD.
 - improves current routes for assessment and follow up, reducing waiting times.
- **This presentation focuses on CYP.**

The future Sheffield offer - delivering 'Support Based on Need Approach' for CYP and their families?

IT'S EVERYBODY'S BUSINESS

All establishments, education, health, care and support staff know how to signpost to what is available and know what is available based on need through training and communications.
Supportive and enabling environments in educational and other settings

IMPROVED PATHWAY

SENCOs refer in addition to current referrers.
Pre-assessment support pathway established.
Additional external assessment capacity.
Clinical staff in all Locality panels to offer advice and guidance.

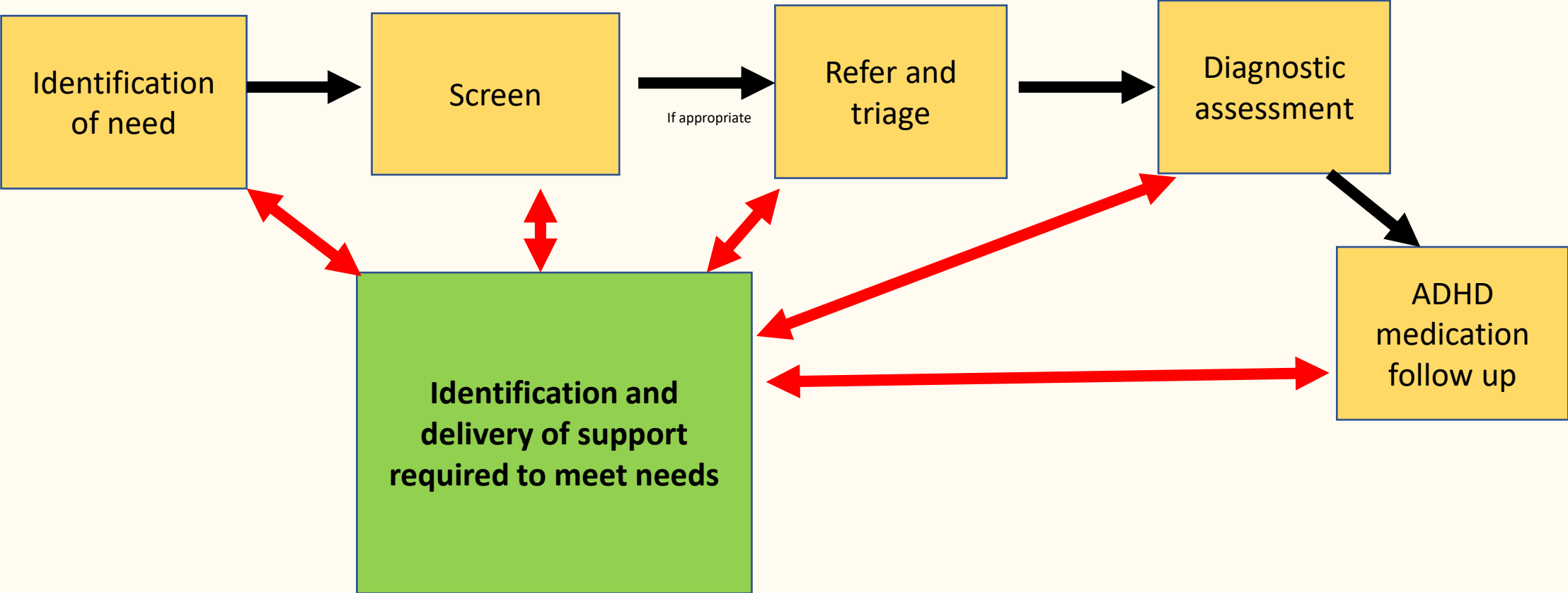
EASIER ACCESS TO SUPPORT

One central hub/first point of contact for all parents carers and young people to access for all support in the city.

MORE SUPPORT AVAILABLE

Parent carer groups and CYP groups in more secondary schools to involve and engage with their school
Peer Support working with Ryegate service.
Support groups accessed in all communities.

Proposed Autism and ADHD approach



Support to meet need provided at all points for families and professionals

Support offers now in place for families and professionals

	1:1 support	Group support	Information and Training	Signposting and navigating
New offers introduced within the last 2 years				
Peer Support Service (for parents)	✓	✓	✓	✓
Autism in Schools offer (now in 15 secondary schools) (for CYP, parents and school staff)		✓	✓	
Senior Navigators (for CYP)	✓			✓
HEE training on identification of need (for professionals)			✓	
Expanded offers within the last 2 years				
Social and Communication Service (for families and school staff)			✓	
Family Action ADHD support (for parents)		✓	✓	✓
SCFT website resources (for all)			✓	✓

These are in addition to the specific local and national charities supporting Autistic people and their families, parenting support available through the Parenting Hub and Family Hubs, 0-5 SEND Service, SENDIAS

Recent evidence of impact

Peer Support Service

April-June 2023

49 group sessions or individual contacts have taken place with 148 attendees.

Includes 1-1 sessions, support groups in Localities A, B, C, F and G plus drop in sessions to raise awareness of the service and a men's group.

108 different parent carers have accessed the service.

Parents appreciating opportunities to come together to gain knowledge, share experiences and to offer peer support to each other.

Parents appreciated having someone to talk to when they are looking for advice and guidance and are feeling overwhelmed by their current situation.

Autism in Schools

Jan 22 – Jul 23

16 schools

189 parent carer meetings held, 966 attendances

153 sessions for young people, reached 199 young people

326 people accessed online training

Communication improved between school and families

Parent/Carers giving feedback on forms/documents/policies

School Attendance improved following adjustments for a CYP

Safe places better understood and used appropriately

Improved sensory environments

Reasonable adjustments being made for individual young people

Increased staff knowledge on autism

Changed school policies.

ADHD pre diagnosis support Jul – Sept 2023

5 drop in café sessions run by Family Action with a range of partners

All the sessions were well attended with parents valuing the chance to seek practical help, talk to professionals and meet other parents with similar worries

Please keep these sessions going. it is a wonderful resource for parents like me who are often at the end of their tether... Bringing together peers and professionals is a very helpful way for parents to feel supported and potentially avoid a crisis by having a forum to share and go home with some reassurance and practical advice.

"It's fabulous. I met with other parents... all going through the same nightmare...
Parent Carer

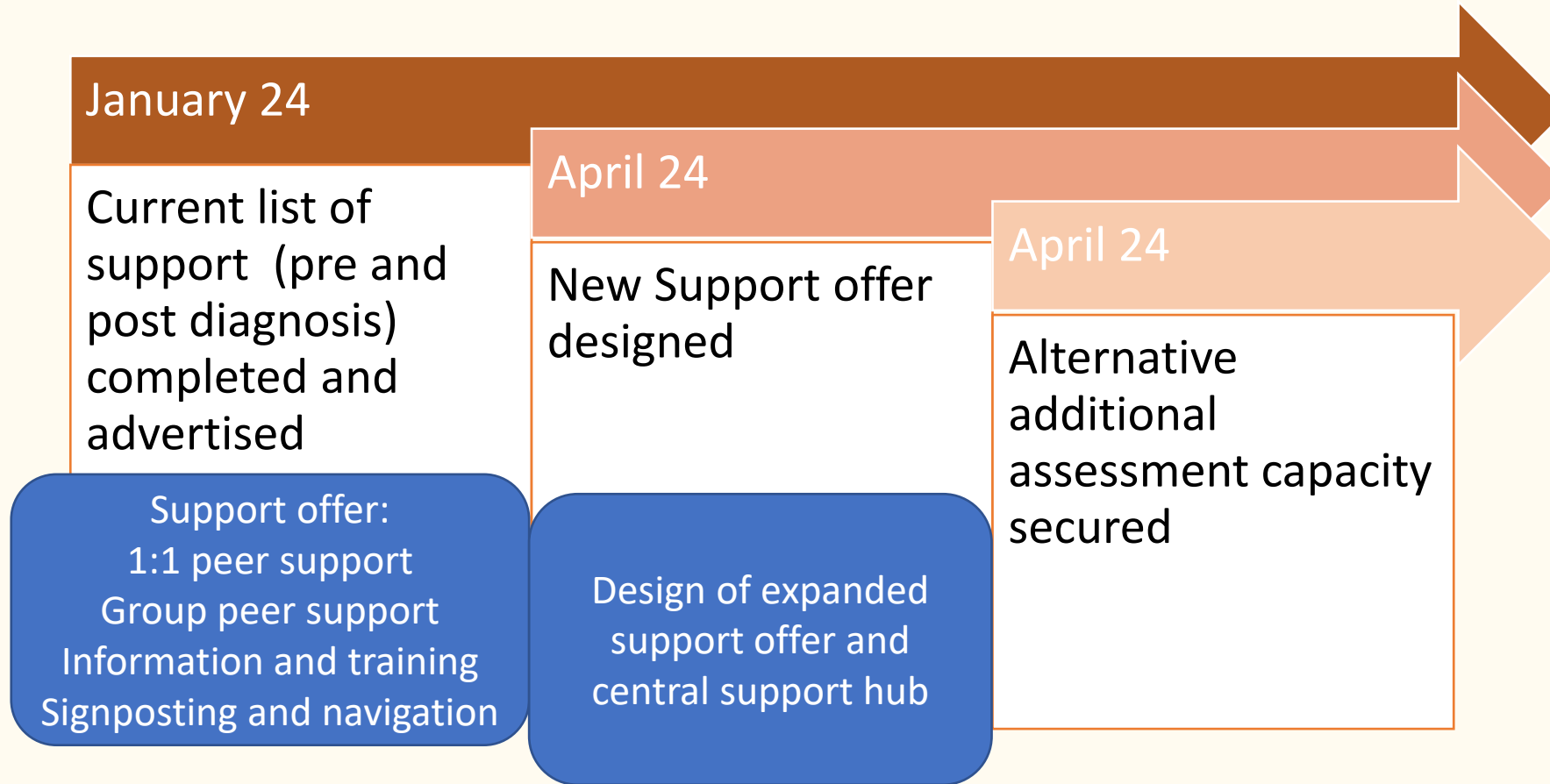
The group has been fabulous to introduce you to these people, you know you've got support."
Parent Carer

"I have felt a lot happier."
Young Person

"The groups help me feel less lonely."
Young Person

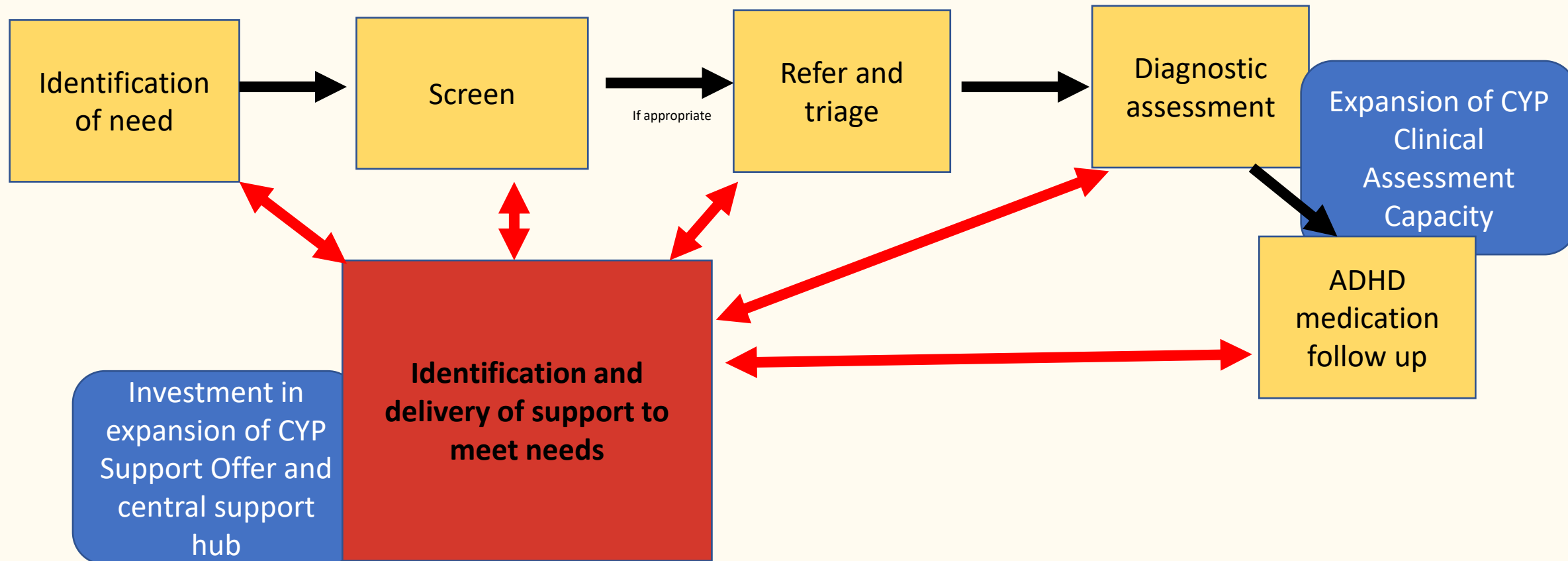
You know they (parent carer group) contributed to a future training package....that's brilliant...if we can do stuff like that, that's what the forum's about.
School staff

Key CYP priorities for November – March 24



Due to significant and unsustainable demand, the CYP Neurodevelopment Task and Finish Group agreed to prioritise the above.

Proposed Autism and ADHD approach



Support to meet need provided at all points for families and professionals

Expansion of CYP Support Offer

Resources required for Sheffield CYP

Expansion of CYP Clinical Assessment Capacity

2023/24
Secured: £222k (non-rec) £70k (rec)
Awaiting confirmation: £107k non-rec
£800k recurrent funding invested by SCFT

2024/25 - TBC
Secured: £111k (non rec)
Seeking approx. £200k non-rec £547k rec

2025/26 - TBC
TBC

Requires multi million pound investment for capacity to meet current demand. To see patients to reduce the backlog to under 52 weeks would require a further multi million pound non-recurrent investment

Milestones and Benefits Timeline

